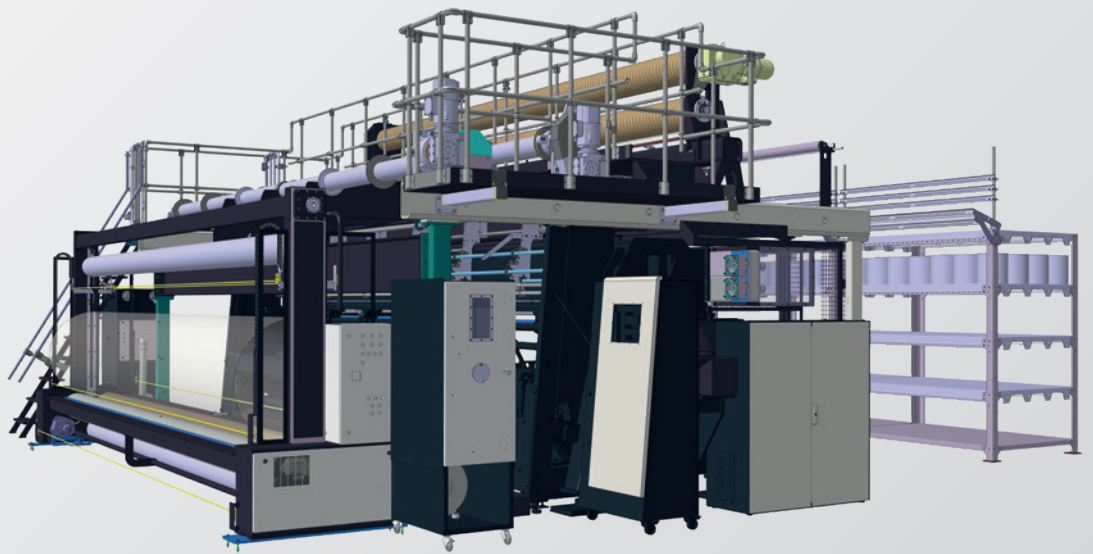


TECHNICAL TEXTILES
产业用纺织品

WEFTTRONIC® II G



High-performance warp-knitting machine with course-oriented weft-insertion for production of grid structures

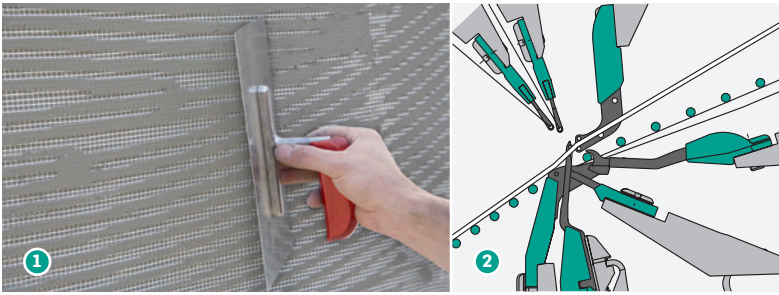
用于生产格栅结构、纬纱铺设与线圈横列相对应的高性能全幅衬纬经编机

Your benefits

- High productivity
- Reduced weft yarn waste
- Optimised handling of brittle-yarn materials

您的优势

- 高产能
- 降低纬纱废料
- 脆性原料的优化处理



- 1 Application plaster grids
应用石膏格栅
- 2 Knitting area with pointed needle and filler bar with sinker
采用尖头复合针和衬经梳（衬经片）的成圈机件示意图

Product features

产品特点

- Production of biaxial fabrics with parallel weft-insertion system
 - Up to two stitch-forming guide bars
 - Up to 6.2 m working width
 - Weft chain division selectable for different yarn counts
 - Optimised knitting area and feeding elements to produce fabrics made from brittle-thread materials
 - Optimised weft yarn system with complementary inserter
- 生产双轴向面料，带有平行全幅衬纬系统
 - 两把成圈地梳
 - 最大工作宽度6.2m
 - 针对不同的纱线细度可以选择不同的衬纬链条
 - 优化的成圈区域和送经组件，能将脆性纱线加工成面料
 - 优化的纬纱系统配备了辅助小车

Technical facts

技术参数

Working width 工作宽度	184", 213", 245" (2" extension possible) 184", 213", 245" (可扩展2英寸)
Working width reduction 工作宽度可调	Up to 60" for all widths 可减少0-60英寸
Gauges 机号	E 6, E 10, E 18 – other gauges on request E 6, E 10, E 18 –其他机号根据需求
Weft-insertion system 铺纬系统	Yarn laying carriage with complementary inserter selectable with 1/3" chain division and 36 yarns or 1/2" chain division and 30 yarns 配备辅助小车的铺纬小车选用1/3英寸的纬纱钩可一次铺设36根纬纱，选用1/2英寸的纬纱钩可一次铺设30根纬纱
No. of warp beams / guide bars 经轴/梳栉数量	Up to two guide bars – max. 32" flange diameter for warp beams One bar for filler threads – max. 40" diameter for warp beams 2把地梳–可用边盘直径最大为32英寸的盘头 1把衬经梳–可用边盘直径最大为40英寸的盘头
Pattern drive 花型驱动装置	With pattern disc 花盘
Take-up device 牵拉装置	Two separately driven three-roller systems 2套独立驱动的3罗拉系统
Batching device 卷取装置	Batching system with surface winding Options: Batch ejector (AE) Traversing device electrical adjustable (C) Pressure roller (D) Weft bow compensator (W) 表面摩擦卷取 选配: 推布装置 (AE) 可电子调节的割刀装置 (C) 压辊装置 (D) 纬纱弯曲矫正装置 (W)
Optional 选配	Multispeed, weft pattern repeat 多速，花样铺纬

