
QUICKSTART GUIDE

FOR KARL MAYER MACHINES



TABLE OF CONTENTS

Introduction	3
Your steps with this guide	4
KAMCOS 2	5
Info	5
Step 1: Connect your OI (Operator Interface) to the k.ey device	5
Step 2: Configuration (KAMCOS 2)	6
Accessing network settings in different KAMCOS 2 versions	7
Option 1	7
Option 2	7
KAMCOS 1	9
Context	9
Step 1: Connect your OI to the k.ey device (KAMCOS 1)	9
1.1 Identify your Operating Interface (OI)	9
1.2 Connect your ethernet cable	10
OI Option 1	10
OI Option 2	10
Step 2: Configuration (KAMCOS 1)	12
2.1 Check network IP	12
Special case	13
Getting support	15
Further information	15

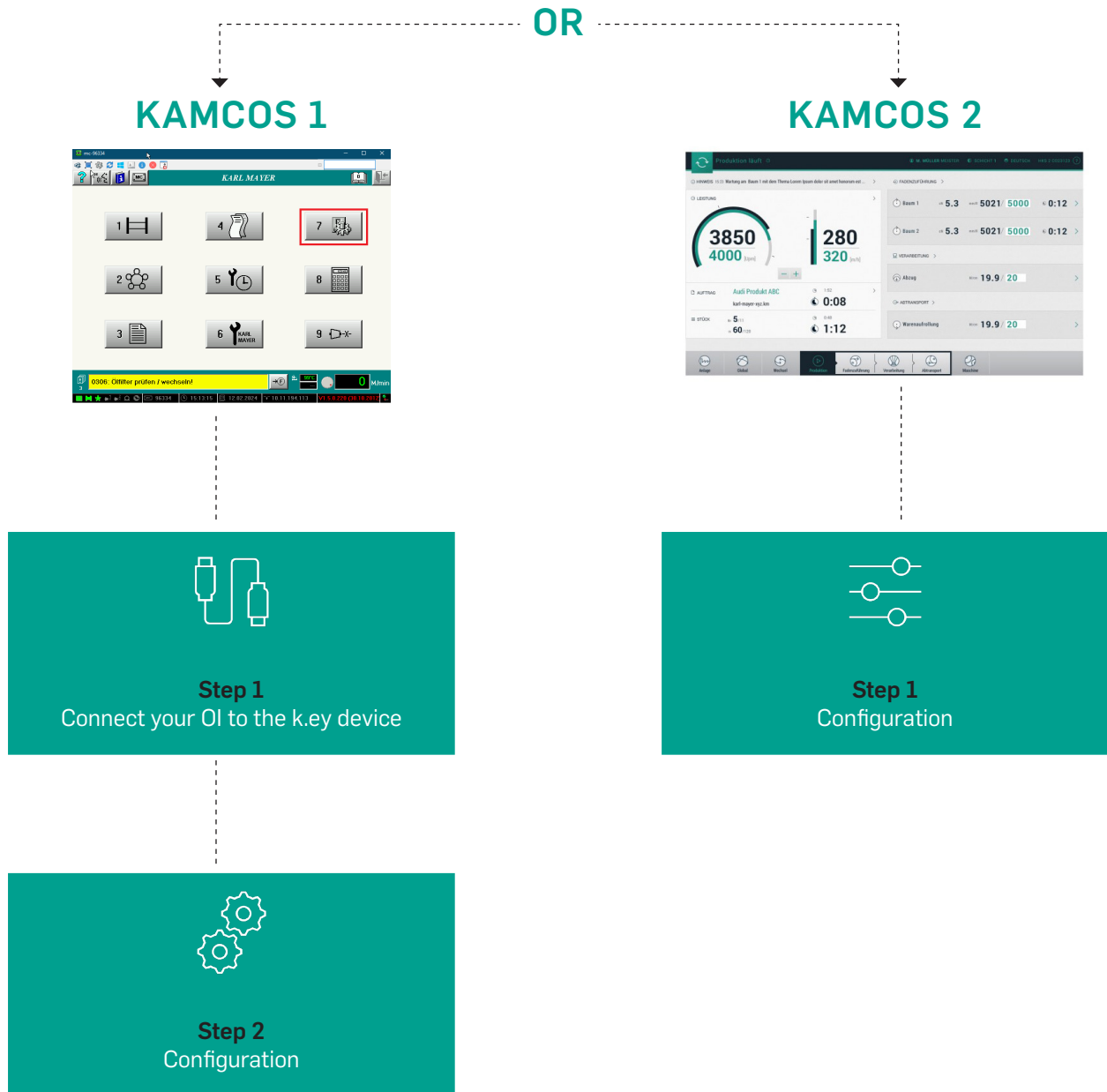
INTRODUCTION

- Since our machines hardware and software have changed over time, there are slightly different methods to access the network functions depending on your machine type.
- If your machine does not match the instructions shown, please contact our service team.

Contact our Service

YOUR STEPS WITH THIS GUIDE

Proceed by clicking either **one** of the following steps below.



KAMCOS 2

Info

- We always suggest that you connect your machines with ethernet cable (wired) instead of a wireless connection.

STEP 1: CONNECT YOUR OI (OPERATOR INTERFACE) TO THE k.ey DEVICE

- Connect the k.ey device via ethernet cable or wireless adapter to the highlighted squares shown below.

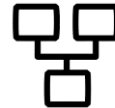


STEP 2: CONFIGURATION (KAMCOS 2)

- Please note, if both the Wi-Fi adapter is plugged in and a network cable is connected to the switch cabinet, two fields for network settings will appear.
- These can be distinguished by their respective symbols shown below:



Wi-Fi (wireless)



Network cable (wired)

If you do not yet have a defined IP address range, you can use the following for your machine park. Please only use these IP addresses if you have also adopted the k.ey configuration.

Machinenumber	Machine IP-Address	Subnetmask	Gateway (k.ey LAN1 Side)
1	192.168.100.11	255.255.255.0	192.168.100.10
2	192.168.100.12	255.255.255.0	192.168.100.10
3	192.168.100.13	255.255.255.0	192.168.100.10
...	...14

These are based on the IP addresses recommended in the k.ey device Quickstart Guide. Get your Quickstart Guide here:



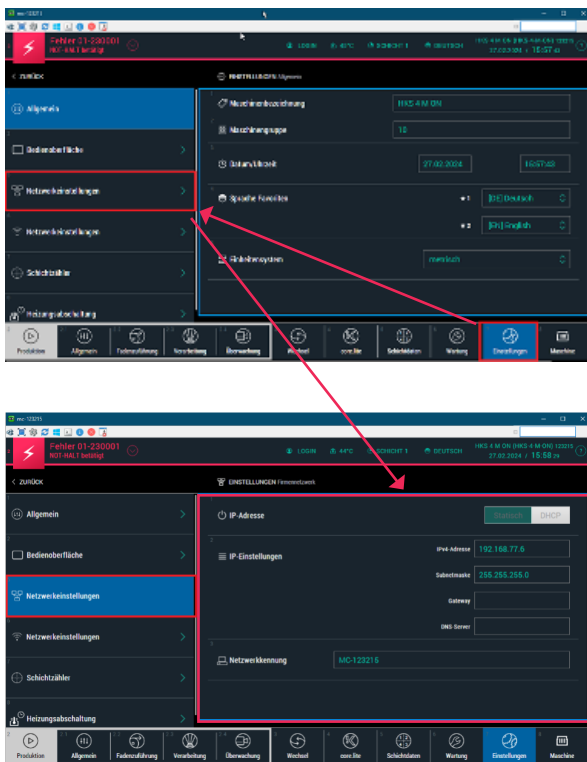
For more information on our k.ey please visit:
www.karlmayer.com/de/produkte/advanced-solutions/key/

Accessing network settings in different KAMCOS 2 versions

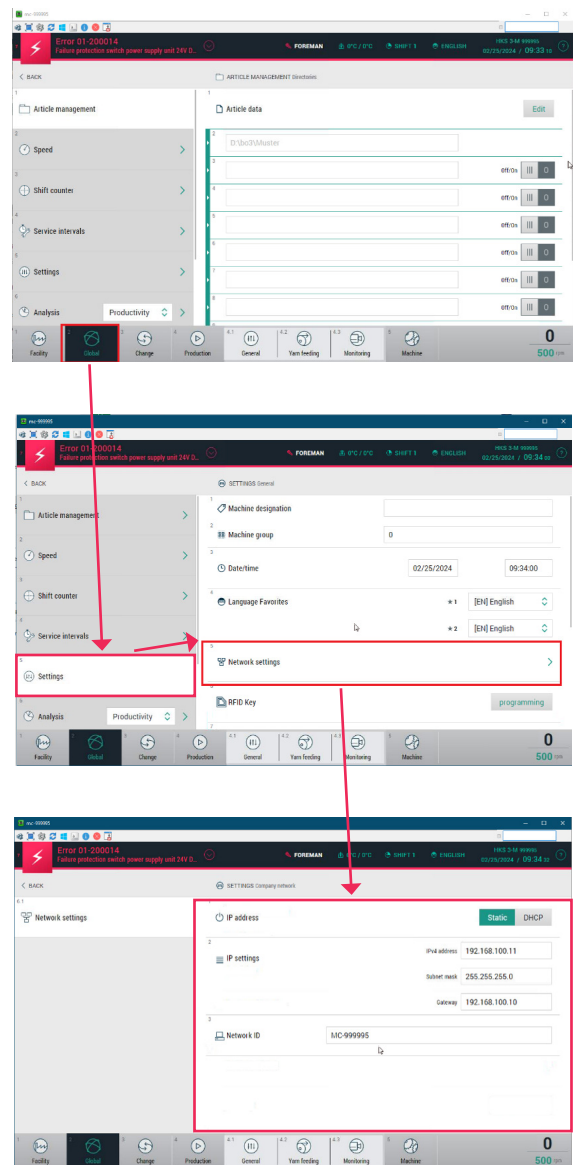
There are different versions of KAMCOS 2, and the way to access the network settings may vary slightly. Here are the two possible methods.

If the machine has been configured correctly, the tab "Facility" will appear. If this tab is visible, the machine has been successfully connected to the network. In this tab, you can also view the k.ey device as well as other machines in the network.

Option 1



Option 2



End of KAMCOS 2 Guide

Click [here](#) for more information or to get support

1.2 Connect your ethernet cable

OI Option 1

- The INDUSTRIAL-PC-TOUCH-12,1-XP comes with an integrated network interface
 1. Connect your k.ey device to the OI Ethernet port.
 2. Reboot the OI.
 3. Proceed by clicking [Step 2](#)

OI Option 2



D-Link adapter



DeLock adapter

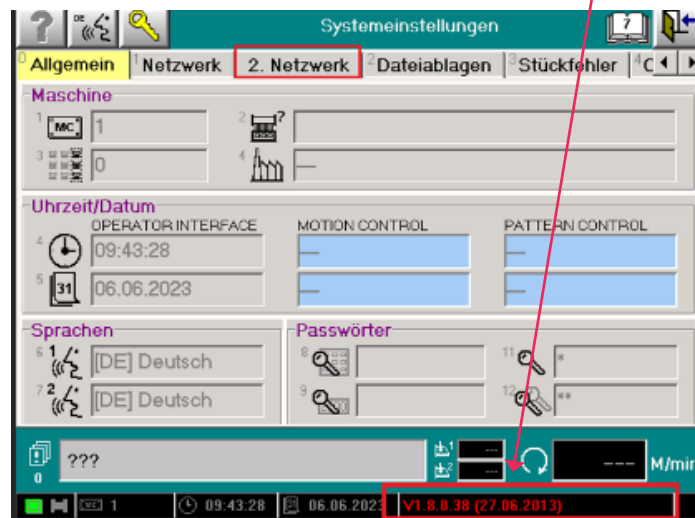
Since the INDUSTRIAL-PC-TOUCH-10,4-XP does not have a network-interface for external applications, an USB to Ethernet adapter must be installed.

- If you have the D-Link or DeLock adapter.
 1. Connect the adapter to the OI USB port
 2. Restart the OI.
 4. Proceed by clicking [Step 2](#)

On newer installations, we are using the Edimax adapter, as the old adapters are no longer being produced. The Edimax adapters require a newer driver, which may need to be installed manually on certain OI versions.



- If you have the **Edimax Adapter**, connect it and check the OI version like shown below:



- Please send the version (like in the picture V1.8.0.38 (27.06.2013)) to our service service4you@karlmayer.com, we will help you ASAP!

STEP 2: CONFIGURATION (KAMCOS 1)

2.1 Check network IP

- After you have established your Ethernet connection please proceed.
- The pictures below will provide you with instructions on how to access your adapter to configure the IP address.
If you do not yet have a defined IP address range, you can use the following for your machine park.

Please only use these IP addresses if you have also adopted the k.ey configuration.

Machine number	Machine IP address	Subnetmask	Gateway (k.ey LAN1 Side)
1	192.168.100.11	255.255.255.0	192.168.100.10
2	192.168.100.12	255.255.255.0	192.168.100.10
3	192.168.100.13	255.255.255.0	192.168.100.10
...	...14

These are based on the IP addresses recommended in the k.ey device Quickstart Guide.

Get your Quickstart Guide here:



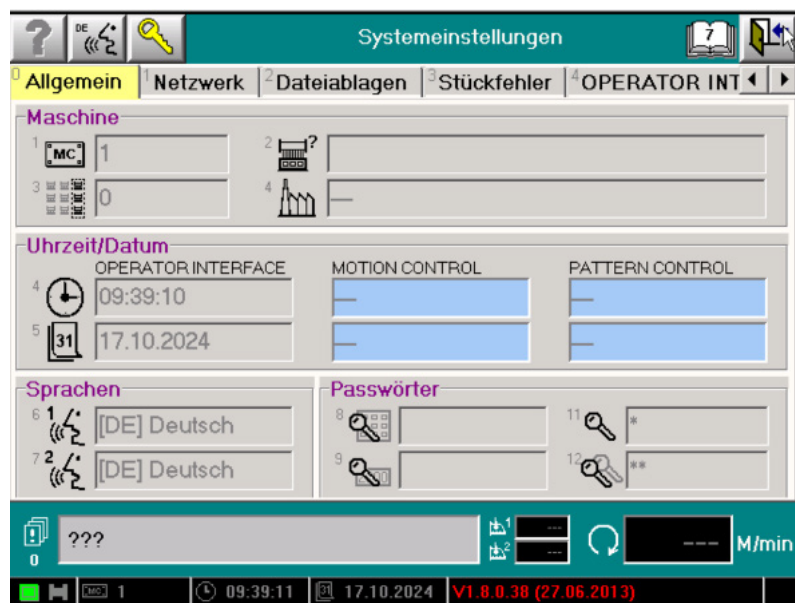
For more information on our k.ey please visit:
www.karlmayer.com/de/produkte/advanced-solutions/key/



SPECIAL CASE

If your 2.-network settings are not shown, please check if your machine has an inserted USB-LAN adapter. This field will only be displayed once the adapter is recognized by the machine.

[Getting Support](#)



End of KAMCOS 1 Guide

Click [here](#) for more information or to get support



GETTING SUPPORT

- Do you need help setting up your machine?
Contact our support team over service4you@karlmayer.com
Or simply click -> to contact our service over email
- You can also get in touch with us over the [customer portal](#).

Important note: Due to compliance rules, please use your business email domain when accessing our portals to contact us.
Personal email domains, such as @gmail.com or @yahoo.com, are not supported.

FURTHER INFORMATION



To fully utilize all digital services from KARL MAYER, please use our [customer portal](#).

