

## External network connection example 外部网路连接示例



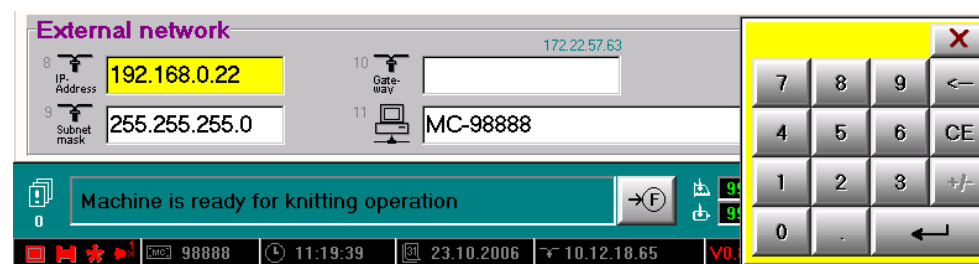
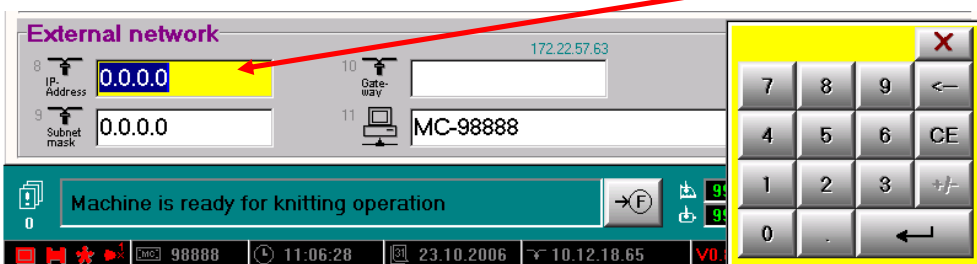
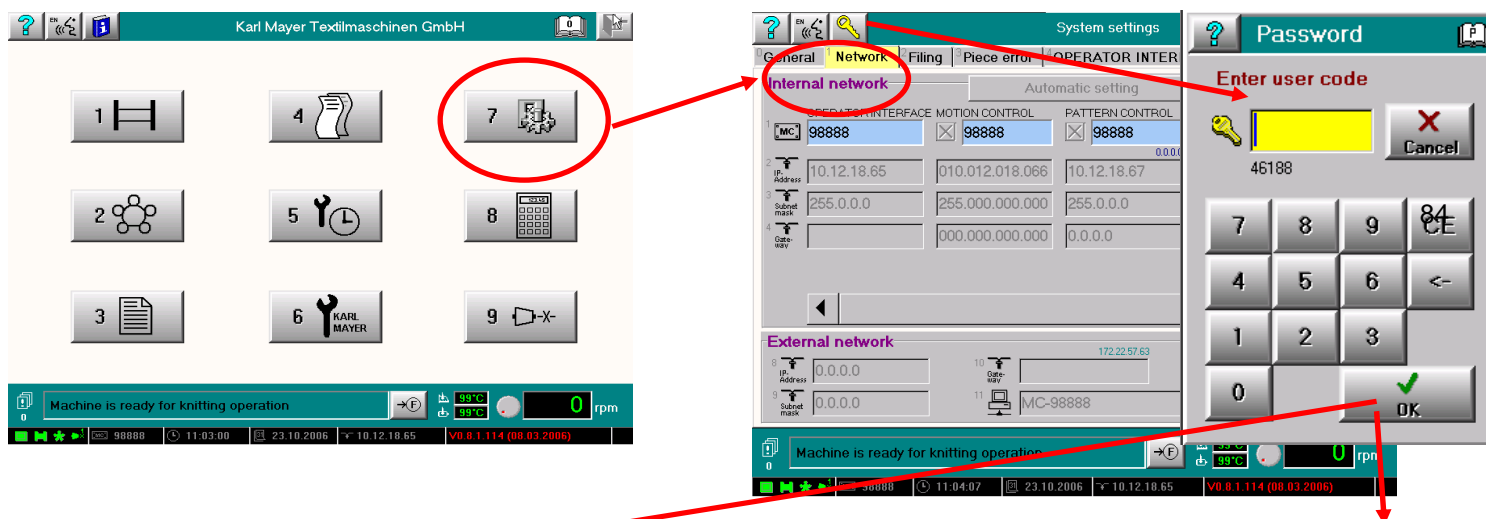
Open the top cover and connect you network here.  
打开电柜顶盖，将您的网络连接于此处。



Note: Do not connect your network to the small network device within the switch cabinet. Because this might cause unexpected machine behaviour and problems in your companies network.

备注: 请不要将网线插在电柜内部小路由器上。由此可导致非预期的机器行为，并会引起您公司网络的错误。

## Change the external network settings on the machine 更改机器上外部网络的设置



This setting will obtain the address automatically. This will be the machine's factory default setting. The Name ("MC-xxxxx") should not be modified.

如此设置会自动获取地址。

这个是出厂的默认设置。机器名称("MC-xxxxx") 保持为原样，不用进行更改。

This setting will show an example of a fixed address. The gateway setting is not necessary if the KAMCOS® Explorer PC is in the same subnet (e.g. PC has IP 192.168.0.121 and the machine 192.168.0.22)

Note: The settings show are regarded as an example, only. They must be changed, so that they match your network environment.

此为手动分配地址的例子。如果装有 KAMCOS®资源管理器的 PC 与机器在相同的子网内，则 gateway 可以不填。(例如：PC 的 IP 为 192.168.0.121，机器的 IP 为 192.168.0.22) 备注：此图片仅为例子，您需要进行更改以便与您的网络环境匹配